



an Enpro Industries company

NFPA



Quincy Medical Systems



NFPA 99 COMPLIANT

QUINCY QMS

QUINCY QMT

QUINCY NFPA MEDICAL SYSTEMS

QUINCY QMS COMPRESSED AIR MEDICAL SYSTEM

- Proven performance in virtually all healthcare applications
- Fully NFPA 99 C 2005 Compliant
- Complete compressed air treatment system ranging from 2-30 hp
- TEFC motors
- Factory mounted aftercoolers
- Modular design minimizes floor space and installation costs
- Fits through standard doorways



MATC Medical Air Treatment and Control Module

RELIABLE AND OPTIMIZED FOR EFFICIENCY

Quincy Compressor developed the Quincy QMS Medical Air Systems because compressed air is vital for all hospitals and clinics. You rely on your compressed air system for critical applications at critical times – and being there without fail is why we designed the Quincy QMS.

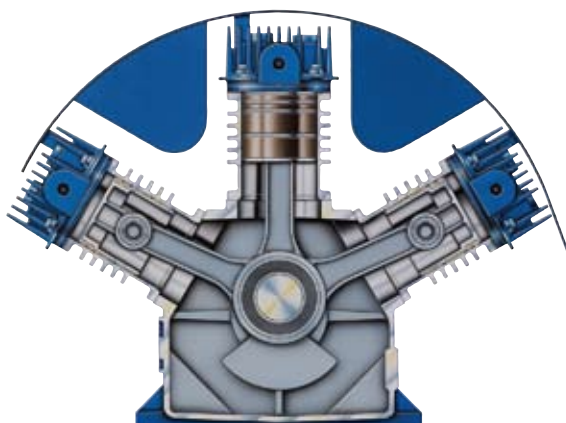
We've combined the proven reliability of the Quincy QRDS single-stage, air-cooled compressor with the most efficient and effective medical air treatment package. Engineered to comply with the latest NFPA requirements, the Quincy QMS are built in a modular format to optimize precious floor space and facilitate installation in both retrofit applications and new construction.

The Quincy Medical Dryer Control modules are built on separate skids with redundant duplex dryers. Coupled with premium filter components, the Dryer Control module helps ensure clean air and efficient operation while minimizing maintenance costs.



The Quincy TQMS 2 to 20 hp is available on 80 to 240 gallon horizontal tanks.

QUINCY QRDS SINGLE STAGE, AIR-COOLED COMPRESSOR



The Quincy QRDS Pump Cut-away

- Quincy QRDS quality delivers up to 100 psig
- Air-cooled design eliminates water management requirements
- Dry crankcase means no oil contamination
- Standard doorway width dimensions mean low cost of installation
- Patented free floating piston pin
- Maintenance free service for 3 years or 10,000 hours of operation
- 5-30 hp two-stage QRDT air systems available upon request

QRDS Compressor Module

QMS COMPRESSED AIR MEDICAL SYSTEM SINGLE STAGE

Model	hp	rpm @100 psig	acfm @100 psig	Tank Size (gal)	Weight (lbs)
QMS-2*	2	738	6.1	80	1970
QMS-3*	3	772	10.0	80	1990
QMS-5*	5	1065	17.2	120	1970
QMS-7.5**	5	603	19.0	120	2770
QMS-7.5**	7.5	859	28.5	120	2885
QMS-10**	10	864	36.3	120	2985
QMS-15**	15	1020	51.0	120	3900
QMS-20**	20	1020	65.1	120	4100
QMS-25**	25	930	95.5	120	4700
QMS-30**	30	1020	103	120	4750

- Available in duplex, triplex and quadraplex modular designs, TQMS, duplex tank mounted only up to 20 hp
- All listed speeds are based on 1750 motor rpm. Actual rpm will vary slightly depending on actual motor rpm

* Duplex, tank mounted, horizontal tank

** Vertical tank on separate module

Call for information on the TQMSD Duplex packages

QMT COMPRESSED AIR MEDICAL SYSTEM TWO STAGE

Model	hp	rpm @100 psig	acfm @100 psig	Tank Size (gal)	Weight (lbs)
QMT-5*	5	731	19	120	2900
QMT-5**	5	731	19	120	2900
QMT-7.5**	7.5	1005	25	120	2885
QMT-10**	10	780	38	120	2985
QMT-15**	15	1020	51	120	3900
QMT-20**	20	705	81.5	120	4100
QMT-25**	25	870	100	120	4700
QMT-30**	30	1020	115	120	4750

- Available in duplex, triplex and quadraplex modular designs, TQMT, duplex tank mounted only up to 15 hp
- All listed speeds are based on 1750 motor rpm. Actual rpm will vary slightly depending on actual motor rpm

* Duplex, tank mounted, horizontal tank

** Vertical tank on separate module

Call for information on the TQMTD Duplex packages

QUINCY NFPA MEDICAL SYSTEMS



The Science of Compressed Air

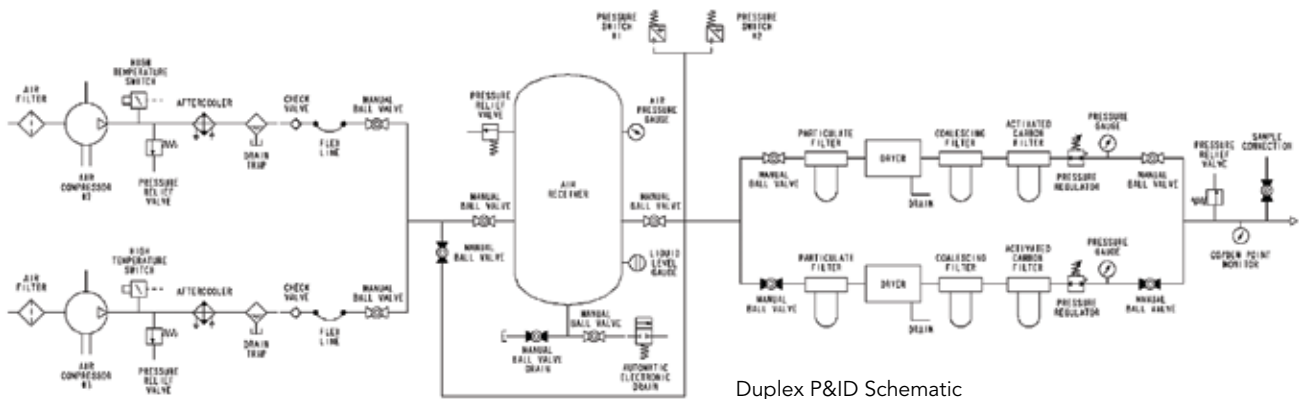


Duplex stack mounted compressor with aftercoolers and moisture trap



MATC Medical Air Treatment and Control Module

Air Quality Classification ISO 8573.1						Wet System Avg. ΔP	
Solids	Moisture	Oil					
Micron	ISO	PDP	ISO	PPM	ISO	psi	Mbar
0.01	1	+32°F	4	0.01	1	10.7	738
0.01	1	+32°F	4	0.003	1	11.8	814



Duplex P&ID Schematic

Calculate Facility Demand in SCFM

Air Outlet/Equipment	Quantity	Per Unit	Per Room	Per Bed	Per Outlet	Simultaneous Use Factor %	Total
Example (Special Surgery)	2		0.5			100	1 SCFM
Anesthetizing Locations							
Special Surgery & Cardiovascular			0.5			100	
Major Surgery & Orthopedic			0.5			100	
Minor Surgery			0.5			75	
Emergency Surgery			0.5			25	
Radiology			0.5			10	
Cardiac Catheterization			0.5			10	
Endoscopy			0.5			10	
Ventilators		3.5				100	
Delivery Room			0.5			100	
Acute Care Locations							
Recovery Room/Surgical				2		25	
ICU/CCU				2		50	
Emergency Room				2		10	
Neonatal ICU				1.5		75	
Dialysis Unit				0.5		10	
Recovery Room/OB			2			25	
Subacute Care Locations							
Nursery			0.5			25	
Patient Rooms			0.5			10	
Exam & Treatment			1			10	
Pre-Op Holding				1.5		10	
Respiratory Care			1			50	
Pulmonary Function Lab					1	50	
EEG & EKG					1	50	
Birthing & LDRP			1			50	



©2007 Quincy Compressor an EnPro Industries company. All rights reserved. Litho in U.S.A. (NFPA-007 08/08)