

300, 350, 400 H.P.

# **Sullivan Palatek®**

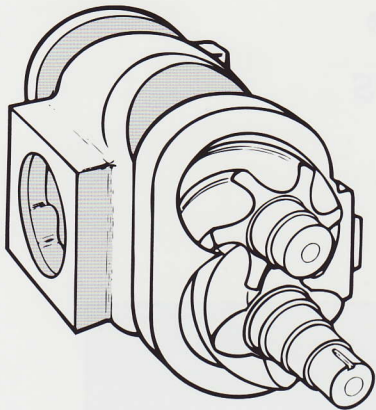
*Rotary Screw Air Compressors*



*Proven performance  
with exceptional design.*



# Sullivan Palatek®



## Lube Fill & Level Elbow

One piece lube fill elbow and level sight glass. Vented cap for pressure release when filling.

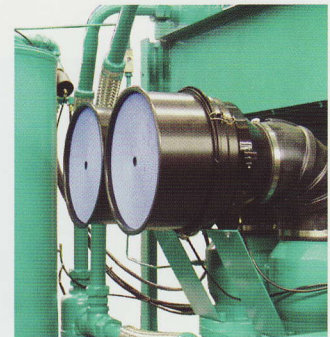


## Air Intake Filter

Dual dry type, with replaceable elements.

## Inlet/Check Valve

Dual housing for dependable performance and complete modulation.



## *The advantages of owning a Sullivan Palatek Rotary Screw Air Compressor.*

Sullivan -Palatek provides low maintenance, direct drive, high performance and one of the most reliable air ends in the industry. **FIVE YEAR WARRANTY.**

Our design features advanced profile rotary screws that provide for improved efficiency. Operating costs are significantly reduced because compressors can be sized to desired operating conditions.

### Standard Features

#### Electric Motor

460 volt (300-400 H.P.), Nema T-frame, C-face, open drip proof squirrel cage induction type.

**FIVE YEAR LINCOLN MOTOR WARRANTY.**

#### Motor Starter

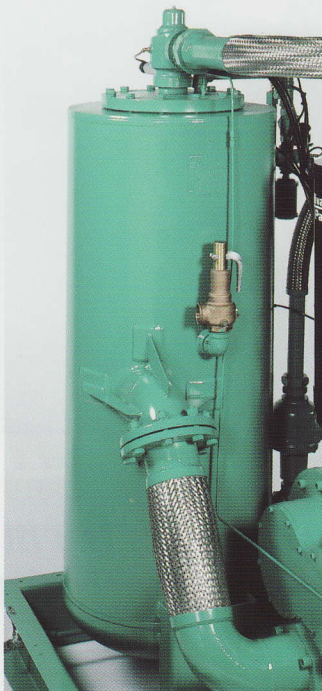
460 volt (300-400 H.P.), full voltage magnetic starter with 110 volt controls, solid state circuit breaker primary and secondary protection, Nema-1 enclosure, UL, ETL listed and three phase over-load with reset and phase failure protection. Other voltages available. Cooling fan protected by overload relay. Soft Start, Solid State and Wye Delta Starters are available upon request.

#### Protective Devices

Class 20 solid state overload relay, high air temperature, high pressure shutdown switches are standard. Anti-restart pressure switch prevents starting while air compressor is pressurized. Anti-reversing control and unloaded start are also standard.

## Separator Tank

ASME coded 200PSIG tank, relief valve, minimum pressure/check valve and high efficiency replaceable air/lube separator element with flexible steel braded discharge pipe.



## Cooling System

Cooling system with single fan motor. Large side by side oil cooler and after cooler for easy cleaning. Updraft design allows hot air to be recovered or discharged from top of machine

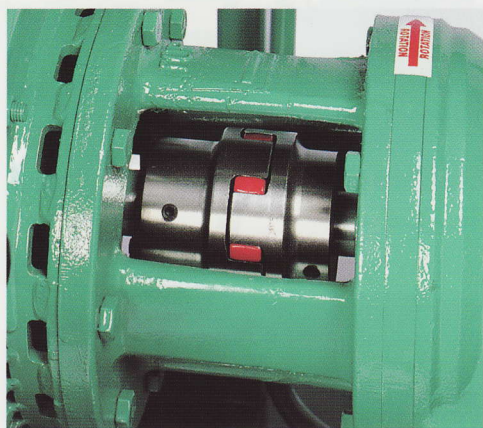
**300, 350 & 400 H.P.**



# Screw Air Compressor"

## Positive Alignment Coupling

Compressor is flange mounted to motor C-face for positive alignment and direct driven by zero maintenance coupling which carries a **Five Year Warranty**.



Typical Coupling Arrangement



Motor and compressor isolated at base for independent, smooth operation.

## Controls

Full modulation, electronic control, for smooth lowest possible no load power. Automatic start/stop or constant speed, timed dual control.

## Instrumentation (Optional)

Line pressure gauge, discharge pressure gauge, hour meter, temperature gauge, oil filter and separator element differential gauges.

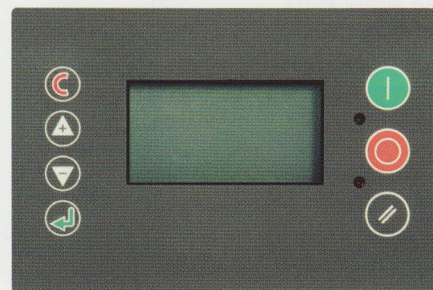
## Acoustical Enclosure (Optional)

Easily removable panels for accessibility and maintenance. Coated acoustical 2 inch material for easy cleaning and quieter package.



## Microprocessor

Solid-state digital readout.



## Dual Oil Filter

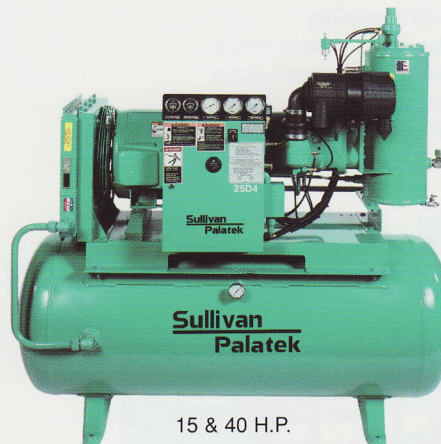
Large capacity spin on type filters, mounted strategically for ease of maintenance.



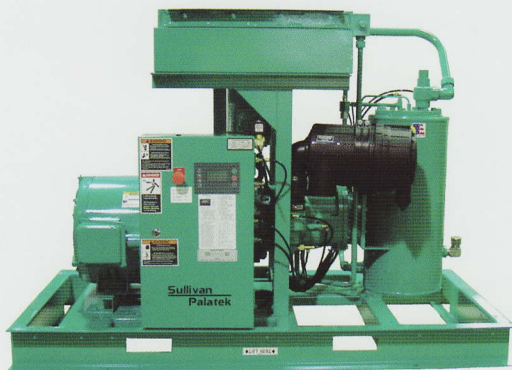




5, 7.5 & 10 H.P.



15 & 40 H.P.



40, 50 & 60UD H.P.

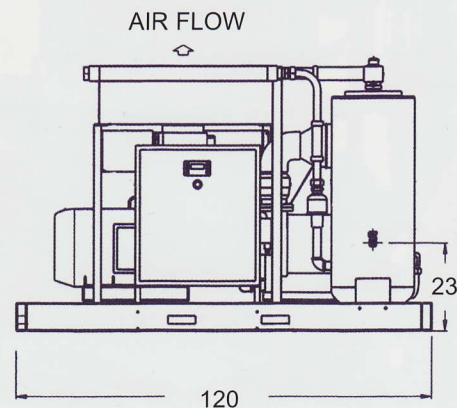
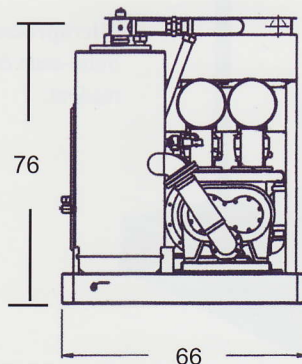


125, 150 & 200UD H.P.

### SPECIFICATIONS

Model	300	350	400
Drive Motor (HP)	300	350	400
Fan Motor (HP)	15	15	15
Sump Capacity (GAL)	40	40	40
Discharge (Inches)	3	3	3
Length (Inches)	120	120	120
Width (Inches)	66	66	66
Height (Inches)	76	76	76
Weight (LBS)	7300	7400	7800
Enclosure (Inches)	122L x 66W x 80H		
Weight (Enclosed)	7800	7900	8300

Sold and Serviced By:



ALL DIMENSIONS SHOWN IN INCHES.